

## Diesel Engine - Slow Speed, Water-Cooled 5 to 20 HP



### TECHNICAL DATA ( STANDARD ENGINES)

Sr. No.	Model No.	Type & Mark	Rated Output HP(kw)	Rated Speed (RPM)	No. Of Cyl.	Bore x Stroke(mm)	Cubic Cap. (cc) per Cyl.	Specific Fuel Consumption At Full Load (SFC)		Weight	
								g/ Kwh	g/ bhph	Nett (kgs)	Gross (kgs)
1	<b>10A1</b>	IDI, TRB, CIP, CIG, <b>ISI</b>	<b>5(3.7)</b>	600	1	139.7	1433	268	197	310	420
2	<b>10A</b>	IDI, TRB, CIP, CIG, <b>ISI</b>	<b>6(4.4)</b>	650	1	139.7	1433	268	197	310	420
3	<b>10B</b>	IDI, BB, LOP, CIP, CIG	<b>6(4.4)</b>	650	1	139.7	1433	268	197	320	430
4	<b>12A</b>	IDI, TRB, CIP, CIG, <b>ISI</b>	<b>8(5.9)</b>	850	1	139.7	1433	268	197	320	430
5	<b>12B</b>	IDI, BB, LOP, CIP, CIG, <b>ISI</b>	<b>8(5.9)</b>	850	1	139.7	1433	268	197	330	440
6	<b>12ADI</b>	IDI, TRB, AP, CIG, <b>ISI</b>	<b>8(5.9)</b>	850	1	139.7	1433	241	177	315	425
7	<b>14A</b>	IDI, TRB, CIP, CIG, <b>ISI</b>	<b>9.5(7.0)</b>	1000	1	139.7	1433	268	197	330	440
8	<b>19A</b>	IDI, TRB, CIP, CIG	<b>10(7.35)</b>	1000	1	120 x 139.7	1580	268	197	330	440
9	<b>15A</b>	IDI, TRB, LOP, CIP, CIG, <b>ISI</b>	<b>10(7.35)</b>	1000	1	120 x 139.7	1580	268	197	340	450
10	<b>15A1</b>	IDI, TRB, LOP, CIP, CIG, <b>ISI</b>	<b>8(5.9)</b>	900	1	120 x 139.7	1580	268	197	340	450
11	<b>15B</b>	IDI, BB, LOP, CIP, CIG	<b>10(7.35)</b>	1000	1	120 x 139.7	1580	268	197	345	455
12	<b>16A</b>	IDI, TRB, LOPM CBW,CIP,CIG, <b>ISI</b>	<b>10(7.35)</b>	1000	1	120 x 139.7	1580	268	197	350	460
13	<b>16A1</b>	IDI, TRB, LOPM CBW,CIP,CIG, <b>ISI</b>	<b>8(5.9)</b>	900	1	120 x 139.7	1580	268	197	350	460
14	<b>16ASD</b>	IDI, TRB, LOP, CBW, HFW, CIP, CIG, SDM, <b>ISI</b>	<b>10(7.35)</b>	1000	1	120 x 139.7	1580	268	197	375	485
15	<b>16ADI</b>	DI, TRB, LOP, CBW, AP, CIG, <b>ISI</b>	<b>10(7.35)</b>	1000	1	120 x 139.7	1580	241	177	345	455
16	<b>16ASDI</b>	DI, TRB, LOP, CBW, HFW, AP, CIG, SDM, <b>ISI</b>	<b>10(7.35)</b>	1000	1	120 x 139.7	1580	241	177	370	480
17	<b>11A</b>	IDI, TRB, LOP, CBW, HFW, CIP, SG, <b>ISI</b>	<b>12(8.8)</b>	1000	1	127 x 139.7	1770	268	197	380	490
18	<b>11A1</b>	IDI, TRB, LOP, CBW, HFW, CIP, SG, <b>ISI</b>	<b>10(7.35)</b>	900	1	127 x 139.7	1770	268	197	380	490
19	<b>17A</b>	IDI, TRB, LOP, CBW, HFW, CIP, SG	<b>12(8.8)</b>	1000	1	127 x 139.7	1770	268	197	390	515
20	<b>17A1</b>	IDI, TRB, LOP, CBW, HFW, CIP, SG	<b>10(7.35)</b>	900	1	127 x 139.7	1770	268	197	390	515
21	<b>28A</b>	IDI, TRB, LOP, CBW, HFW, CIP, SG	<b>14(10.3)</b>	1000	1	127 x 160	2026	268	197	400	510
22	<b>28A1</b>	IDI, TRB, LOP, CBW, HFW, CIP, SG, <b>ISI</b>	<b>10(7.35)</b>	900	1	127 x 160	2026	268	197	400	510
23	<b>29ADI</b>	DI,TRB, LOP,CBW,HFW, AP,SG	<b>15(11.0)</b>	1000	1	127 x 160	2026	241	177	395	505
24	<b>29ADI1</b>	DI,TRB, LOP,CBW,HFW, AP, SG, <b>ISI</b>	<b>10(7.35)</b>	900	1	127 x 160	2026	241	177	395	505
25	<b>30ADI</b>	DI,TRB, LOP,CBW,HFW, AP, SG	<b>16(11.8)</b>	1000	1	130 x 160	2123	241	177	400	510
26	<b>30ADI1</b>	DI,TRB, LOP,CBW,HFW, AP, SG	<b>10(7.35)</b>	900	1	130 x 160	2123	241	177	400	510
27	<b>18ADI</b>	DI,TRB,CBW,HFW,AP, CIG	<b>18(13.2)</b>	750	1	155 x 177.8	3353	241	177	565	710
28	<b>18ADI2</b>	DI,TRB,CBW,HFW,AP, CIG	<b>20(14.7)</b>	825	1	155 x 177.8	3353	241	177	565	710

Note : All Above Models Are Governing Class B, (GCB)

IDI = Indirect Injection  
 DI = Direct Injection  
 TRB = Taper Roller Bearing  
 LOP = Lubricating Oil Pump  
 CIP = Cast Iron Piston  
 CIG = Cast Iron Cam Gear & Idler Gear

HFW = Heavy Flywheel  
 BB = Bush Bearing  
 CBW = Crankshaft Balance Weight  
 AP = Aluminium Piston  
 SG = Steel Cam Gear & Idler Gear  
 SDM = Super Deluxe Model

## Diesel Engine - Slow Speed, Water-Cooled 12 to 20 HP



TECHNICAL DATA ( STANDARD ENGINES)											
Sr. No.	Model No.	Type & Mark	Rated Output HP(kw)	Rated Speed (RPM)	No. Of Cyl.	Bore x Stroke(mm)	Cubic Cap. (cc) per Cyl.	Specific Fuel Consumption At Full Load (SFC)		Weight	
								g/ Kwh	g/ bhph	Nett (kgs)	Gross (kgs)
1	<b>20A</b>	IDI, BB, LOP, CIP, CIG	<b>12(8.8)</b>	650	2	139.7	1433	268	197	470	615
2	<b>21A</b>	IDI, BB, LOP, CIP, CIG	<b>16(11.8)</b>	850	2	139.7	1433	268	197	480	625
3	<b>22A</b>	IDI, BB, LOP, CIP, CIG	<b>20(14.7)</b>	1000	2	120 x 139.7	1580	268	197	490	635

Note : All Above Models Are Governing Class B1 (GCB)

IDI = Indirect Injection  
 TRB = Taper Roller Bearing  
 LOP = Lubricating Oil Pump  
 CIP = Cast Iron Piston  
 CIG = Cast Iron Cam Gear & Idler Gear  
 HFW = Heavy Flywheel

DI = Direct Injection  
 BB = Bush Bearing  
 CBW = Crankshaft Balance Weight  
 AP = Aluminium Piston  
 SG = Steel Cam Gear & Idler Gear  
 SDM = Super Deluxe Model

## Diesel Engine - Slow Speed, Water-Cooled 6 to 14 HP



TECHNICAL DATA ( STANDARD ENGINES)											
Mini Lister Type, Slow Speed, Water - Cooled, Light Weight Diesel Engines											
Sr. No.	Model No.	Type & Mark	Rated Output HP(kw)	Rated Speed (RPM)	No. Of Cyl.	Bore x Stroke(mm)	Cubic Cap. (cc) per Cyl.	Specific Fuel Consumption At Full Load (SFC)		Weight	
								g/ Kwh	g/ bhph	Nett (kgs)	Gross (kgs)
1	<b>23A</b>	IDI, TRB,CIP, CIG, <b>ISI</b>	<b>6(4.4)</b>	650	1	114.3 x 130	1333	255	187.5	275	365
2	<b>24A</b>	IDI, TRB,CIP, CIG, <b>ISI</b>	<b>8(5.9)</b>	850	1	114.3 x 130	1333	255	187.5	280	370
3	<b>25A</b>	IDI, TRB, LOP, CBW, CIP, CIG, <b>ISI</b>	<b>10(7.35)</b>	1000	1	120 x 130	1470	268	197	310	400
4	<b>25ADI</b>	DI, TRB, LOP, CBW, AP, CIG	<b>10(7.35)</b>	1000	1	120 x 130	1470	241	177	305	395
5	<b>26A</b>	DI, TRB, LOP, CBW, CIP, SG, <b>ISI</b>	<b>12(8.8)</b>	1000	1	127 x 130	1646	255	187.5	325	415
6	<b>26A1</b>	DI, TRB, LOP, CBW, CIP, SG, <b>ISI</b>	<b>10(7.35)</b>	900	1	127 x 130	1646	255	187.5	325	415
7	<b>27ADI</b>	DI, TRB, LOP, CBW, AP, CIG	<b>14(10.3)</b>	1000	1	127 x 130	1646	241	177	320	410
8	<b>27ADI1</b>	DI, TRB, LOP, CBW, AP, CIG	<b>10(7.35)</b>	900	1	127 x 130	1646	241	177	320	410

Note : All Above Models Are Governing Class B1 (GCB)

IDI = Indirect Injection  
 TRB = Taper Roller Bearing  
 LOP = Lubricating Oil Pump  
 CIP = Cast Iron Piston  
 CIG = Cast Iron Cam Gear & Idler Gear  
 HFW = Heavy Flywheel

DI = Direct Injection  
 BB = Bush Bearing  
 CBW = Crankshaft Balance Weight  
 AP = Aluminium Piston  
 SG = Steel Cam Gear & Idler Gear  
 SDM = Super Deluxe Model

## Diesel Engine - High Speed, Water-Cooled 3 to 18 HP



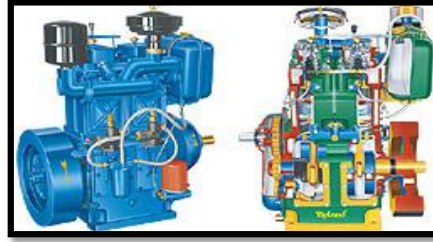
TECHNICAL DATA ( STANDARD ENGINES)												
Sr. No.	Model No.	Type & Mark	Rated Output HP(kw)	Rated Speed (RPM)	No. Of Cyl.	Bore x Stroke(mm)	Cubic Cap. (cc) per Cyl.	Specific Fuel Consumption At Full Load (SFC)		Weight		
								g/ kWh	g/ bhph	Nett (kgs)	Gross (kgs)	
1	<b>51A</b>	TRB, POP, CIG, SGC, GCB, <b>ISI</b>	<b>5(3.7)</b>	1500	1	80 x 110	553	235	173	150	215	
2	<b>61A</b>	BB, POP, CIG, SGC, GCB	<b>5(3.7)</b>	1500	1	80 x 110	553	235	173	150	215	
3	<b>52A</b>	TRB, POP, CIG, SGC, GCB, <b>ISI</b>	<b>6.5(4.8)</b>	1500	1	85 x 110	624	251	185	150	215	
4	<b>62A</b>	BB, POP, CIG, SGC, GCB	<b>6.5(4.8)</b>	1500	1	85 x 110	624	251	185	150	215	
5	<b>69A</b>	TRB, POP, CIG, SGC, GCB, <b>ISI</b>	<b>7.5(5.5)</b>	1500	1	87.5 x 110	661	251	185	150	215	
6	<b>70A</b>	BB, POP, CIG, BGC, GCB	<b>7.5(5.5)</b>	1500	1	87.5 x 110	661	251	185	170	235	
7	<b>48A</b>	TRB, POP, CIG, BGC, GCB	<b>7.5(5.5)</b>	1500	1	87.5 x 110	661	251	185	170	235	
8	<b>69A1</b>	TRB, POP, CIG, SGC, GCB, <b>ISI</b>	<b>8(5.9)</b>	1600	1	87.5 x 110	661	251	185	150	215	
9	<b>69ASD</b>	TRB, POP, HFW, CIG, SGC, GCB, SDM	<b>8(5.9)</b>	1800	1	87.5 x 110	661	251	185	165	230	
10	<b>70ASD</b>	BB, GOP, HFW, CIG, SGC, GCB, SDM	<b>8(5.9)</b>	1800	1	87.5 x 110	661	251	185	185	250	
11	<b>53A</b>	TRB, POP, CIG, SGC, GCB, <b>ISI</b>	<b>8(5.9)</b>	1500	1	95 x 110	780	251	185	170	235	
12	<b>63A</b>	BB, POP, CIG, BGC, GCB	<b>8(5.9)</b>	1500	1	95 x 110	780	251	185	185	250	
13	<b>49A</b>	TRB, POP, CIG, BGC, GCB	<b>8(5.9)</b>	1500	1	95 x 110	780	251	185	185	250	
14	<b>54A</b>	TRB, POP, CIG, SGC, GCB, <b>ISI</b>	<b>10(7.35)</b>	1500	1	102 x 110	898	251	185	170	235	
15	<b>64A</b>	BB, POP, CIG, BGC, GCB, <b>ISI</b>	<b>10(7.35)</b>	1500	1	102 x 110	898	251	185	185	250	
16	<b>50A</b>	TRB, POP, CIG, BGC, GCB	<b>10(7.35)</b>	1500	1	102 x 110	898	251	185	185	250	
17	<b>83A</b>	TRB, GOP, HFW, CIG, BGC, OFPG, GCA, SDM	<b>10(7.35)</b>	1500	1	102 x 116	947	251	185	200	265	
18	<b>71A</b>	TRB, POP, CIG, SGC, GCB	<b>12.5(9.2)</b>	1500	1	114.3 x 110	1128	251	185	175	240	
19	<b>71A1</b>	TRB, POP, CIG, BGC, GCB	<b>10(7.35)</b>	1440	1	114.3 x 110	1128	251	185	175	240	
20	<b>84A</b>	TRB, GOP, HFW, CIG, BGC, OFPG, GCA, SDM	<b>12.5(9.2)</b>	1500	1	114.3 x 116	1190	251	185	205	270	
21	<b>84A1</b>	TRB, GOP, HFW, CIG, BGC, OFPG, GCA, SDM, <b>ISI</b>	<b>10(7.35)</b>	1440	1	114.3 x 116	1190	251	185	205	270	
22	<b>84A2</b>	TRB, GOP, HFW, CIG, BGC, OFPG, GCA, SDM	<b>15(11.0)</b>	1800	1	114.3 x 116	1190	251	185	205	270	
23	<b>89A</b>	TRB, GOP, HFW, CIG, BGC, OFPG, GCA, SDM	<b>15(11.0)</b>	1500	1	120 x 125	1413	251	185	210	275	
24	<b>89A1</b>	TRB, GOP, HFW, CIG, BGC, OFPG, GCA, SDM	<b>10(7.35)</b>	1440	1	120 x 125	1413	251	185	210	275	
25	<b>89A3</b>	TRB, GOP, HFW, CIG, BGC, OFPG, GCA, SDM	<b>18(13.2)</b>	1800	1	120 x 125	1413	251	185	210	275	
<b>Mini Petter Type, High Speed, Water - Cooled, Light Weight Diesel Engines</b>												
26	<b>90A</b>	TRB, POP, CIG, SGC, GCB, <b>ISI</b>	<b>3(2.2)</b>	1500	1	76 x 76	345	251	187.5	275	365	
27	<b>91A</b>	TRB, POP, CIG, SGC, GCB, <b>ISI</b>	<b>3.5(2.6)</b>	1500	1	76 x 76	345	251	187.5	280	370	
28	<b>92A</b>	TRB, POP, CIG, SGC, GCB, <b>ISI</b>	<b>4.5(3.3)</b>	2050	1	76 x 76	345	251	197	310	400	
29	<b>93A</b>	TRB, POP, CIG, SGC, GCB, <b>ISI</b>	<b>5(3.7)</b>	2150	1	76 x 76	345	251	177	305	395	
<b>Mini Petter Type, High Speed, Water - Cooled, Light Weight Diesel Engines</b>												
30	<b>50M</b>	TRB, POP, CIG, SGC, GCB	<b>5(3.7)</b>	1500	1	87.5 x 95	571	251	185	115	170	
31	<b>65M</b>	TRB, POP, CIG, SGC, GCB	<b>6.5(4.8)</b>	1600	1	87.5 x 95	571	251	185	115	170	
32	<b>75MA</b>	TRB, POP, CIG, SGC, GCB	<b>7.5(5.5)</b>	1800	1	87.5 x 95	571	251	185	115	170	
33	<b>80MA</b>	TRB, POP, CIG, SGC, GCB	<b>8(5.9)</b>	1800	1	87.5 x 95	571	251	185	115	170	
34	<b>75M</b>	TRB, POP, CIG, SGC, GCB	<b>7.5(5.5)</b>	1500	1	95 x 95	673	251	185	120	175	
35	<b>80M</b>	TRB, POP, CIG, SGC, GCB	<b>8(5.9)</b>	1600	1	95 x 95	673	251	185	120	175	
36	<b>85M</b>	TRB, POP, CIG, SGC, GCB	<b>9(6.6)</b>	1800	1	95 x 95	673	251	185	120	175	

Note : All Above Models Are Direct Injection (DI) with Aluminium Piston (AP) & Crankshaft Balance Weight (CBW)

IDI = Indirect Injection  
 TRB = Taper Roller Bearing  
 LOP = Lubricating Oil Pump  
 CIP = Cast Iron Piston  
 CIG = Cast Iron Cam Gear & Idler Gear  
 HFW = Heavy Flywheel

DI = Direct Injection  
 BB = Bush Bearing  
 CBW = Crankshaft Balance Weight  
 AP = Aluminium Piston  
 SG = Steel Cam Gear & Idler Gear  
 SDM = Super Deluxe Model

## Diesel Engine - High Speed, Water-Cooled 10 to 25 HP



TECHNICAL DATA ( STANDARD ENGINES)											
Sr. No.	Model No.	Type & Mark	Rated Output HP(kW)	Rated Speed (RPM)	No. Of Cyl.	Bore x Stroke(mm)	Cubic Cap. (cc) per Cyl.	Specific Fuel Consumption At Full Load (SFC)		Weight	
								g/ kWh	g/ bhph	Nett (kgs)	Gross (kgs)
1	<b>31A</b>	TRB, GOP, CIG, BGC, OFPG, GCB	<b>10(7.35)</b>	1500	2	80 x 110	553	251	185	265	360
2	<b>72A</b>	BB, GOP, CIG, BGC, OFPG, GCB	<b>10(7.35)</b>	1500	2	80 x 110	553	251	185	265	360
3	<b>32A</b>	TRB, GOP, CIG, BGC, OFPG, GCB	<b>13(9.6)</b>	1500	2	85 x 110	624	251	185	265	360
4	<b>73A</b>	BB, GOP, CIG, BGC, OFPG, GCB	<b>13(9.6)</b>	1500	2	85 x 110	624	251	185	265	360
5	<b>33A</b>	TRB, GOP, CIG, BGC, OFPG, GCB	<b>15(11.0)</b>	1500	2	87.5 x 110	661	251	185	265	360
6	<b>74A</b>	BB, GOP, CIG, BGC, OFPG, GCB	<b>15(11.0)</b>	1500	2	87.5 x 110	661	251	185	265	360
7	<b>34A</b>	TRB, GOP, CIG, BGC, OFPG, GCB	<b>16(11.8)</b>	1500	2	95 x 110	780	251	185	270	365
8	<b>59A</b>	BB, GOP, CIG, BGC, OFPG, GCB	<b>16(11.8)</b>	1500	2	95 x 110	780	251	185	270	365
9	<b>35A</b>	TRB, GOP, HFW, CIG, BGC, OFPG, GCB	<b>20 (14.7)</b>	1500	2	102 x 110	898	251	185	285	380
10	<b>60A</b>	BB, GOP, HFW, CIG, GBC, OFPG, GCB	<b>20 (14.7)</b>	1500	2	102 x 110	898	251	185	285	380
11	<b>36A</b>	TRB, GOP, HFW, CIG, BGC, OFPG, GCA, SDM	<b>20 (14.7)</b>	1500	2	102 x 116	947	251	182	290	385
12	<b>86A</b>	BB, GOP, HFW, CIG, BGC, OFPG, GCA, SDM	<b>20 (14.7)</b>	1500	2	102 x 116	947	251	182	290	385
13	<b>37A</b>	TRB, GOP, HFW, CIG, BGC, OFPG, GCB	<b>25 (18.4)</b>	1500	2	114.3 x 110	1128	251	185	290	385
14	<b>75A</b>	BB, GOP, HFW, CIG, BGC, OFPG, GCB	<b>25 (18.4)</b>	1500	2	114.3 x 110	1128	251	185	290	385
15	<b>38A</b>	TRB, GOP, HFW, CIG, GBC, OFPG, GCA, SDM	<b>25 (18.4)</b>	1500	2	114.3 x 116	1190	251	185	295	390
16	<b>87A</b>	BB, GOP, HFW, CIG, BGC, OFPG, GCA, SDM	<b>25 (18.4)</b>	1500	2	114.3 x 116	1190	251	185	295	390

Note : All Above Models Are Direct Injection (DI) with Aluminium Piston (AP) & Crankshaft Balance Weight (CBW)

TRB = Taper Roller Bearing

POP = Plunger Oil Pump

LOP = Lubricating Oil Pump

CIG = Cast Iron Cam Gear & Idler Gear

SGC = Small Gear Cover (Sheet Metal)

GCA = Governing Class A2

HFW = Heavy Flywheel

CIP = Cast Iron Piston

OFPG = Outside Full Flow Oil Filter With Oil Pressure Gauge

BB = Bush Bearing

GOP = Gear Oil Pump

SG = Steel Cam Gear & Idler Gear

BGC = Big Gear Cover (Cast Iron)

GCB = Governing Class B1

SDM = Super Deluxe Model

ES = Self/Electric Start Arrangement With Solenoid Switch & Alternator Type Battery Charger

## Diesel Engine - High Speed, Water-Cooled 30 to 45 HP



TECHNICAL DATA ( STANDARD ENGINES)											
Sr. No.	Model No.	Type & Mark	Rated Output HP(kW)	Rated Speed (RPM)	No. Of Cyl.	Bore x Stroke(mm)	Cubic Cap. (cc) per Cyl.	Specific Fuel Consumption At Full Load (SFC)		Weight	
								g/kWh	g/bhph	Nett (kgs)	Gross (kgs)
1	<b>300AWB</b>	TRB, GOP, HFW, SG, ES, BGC, OFPG, GCA, SDM	<b>30(22.0)</b>	1500	3	102 x 116	947	251	185	470	590
2	<b>300AW</b>	BB, GOP, HFW, SG, ES, BGC, OFPG, GCA, SDM	<b>30(22.0)</b>	1500	3	102 x 116	947	251	185	470	590
3	<b>375AWB</b>	TRB, GOP, HFW, SG, ES, BGC, OFPG, GCA, SDM	<b>37.5(27.6)</b>	1500	3	114.3 x 116	1190	251	185	470	595
4	<b>375AW</b>	BB, GOP, HFW, SG, ES, BGC, OFPG, GCA, SDM	<b>37.5(27.6)</b>	1500	3	114.3 x 116	1190	251	185	470	595
5	<b>450AWB</b>	TRB, GOP, HFW, SG, ES, BGC, OFPG, GCA, SDM	<b>45(33.0)</b>	1500	3	120 x 120	1356	251	185	470	600
6	<b>450AW</b>	BB, GOP, HFW, SG, ES, BGC, OFPG, GCA, SDM	<b>45(33.0)</b>	1500	3	120 x 120	1356	251	185	470	600

Note : All Above Models Are Direct Injection (DI) with Aluminium Piston (AP) & Crankshaft Balance Weight (CBW)

TRB = Taper Roller Bearing

POP = Plunger Oil Pump

LOP = Lubricating Oil Pump

CIG = Cast Iron Cam Gear & Idler Gear

SGC = Small Gear Cover (Sheet Metal)

GCA = Governing Class A2

HFW = Heavy Flywheel

CIP = Cast Iron Piston

OFPG = Outside Full Flow Oil Filter With Oil Pressure Gauge

BB = Bush Bearing

GOP = Gear Oil Pump

SG = Steel Cam Gear & Idler Gear

BGC = Big Gear Cover (Cast Iron)

GCB = Governing Class B1

SDM = Super Deluxe Model

ES = Self/Electric Start Arrangement With Solenoid Switch & Alternator Type Battery Charger

## Diesel Engine - High Speed, Air-Cooled [FTA] 3 to 10 HP



TECHNICAL DATA ( STANDARD ENGINES)											
Sr. No.	Model No.	Type & Mark	Rated Output HP(kw)	Rated Speed (RPM)	No. Of Cyl.	Bore x Stroke(mm)	Cubic Cap. (cc) per Cyl.	Specific Fuel Consumption At Full Load (SFC)		Weight	
								g/kWh	g/bhph	Nett (kgs)	Gross (kgs)
1	<b>55A-FTA</b>	TRB, POP, SGC, GCB, <b>ISI</b>	<b>5(3.7)</b>	1500	1	80 x 110	553	251	173	155	220
2	<b>65A-FTA</b>	BB, POP, SGC, GCB	<b>5(3.7)</b>	1500	1	80 x 110	553	251	185	155	220
3	<b>56A-FTA</b>	TRB, POP, SGC, GCB	<b>6.5(4.8)</b>	1500	1	85 x 110	624	251	185	155	220
4	<b>66A-FTA</b>	BB, POP, SGC, GCB	<b>6.5(4.8)</b>	1500	1	85 x 110	624	251	185	155	220
5	<b>76A-FTA</b>	TRB, POP, SGC, GCB	<b>7.5(5.5)</b>	1500	1	87.5 x 110	661	251	185	155	220
6	<b>77A-FTA</b>	BB, POP, BGC, GCB	<b>7.5(5.5)</b>	1500	1	87.5 x 110	661	251	185	170	235
7	<b>45A-FTA</b>	TRB, POP, BGC, GCB	<b>7.5(5.5)</b>	1500	1	87.5 x 110	661	251	185	170	235
8	<b>57A-FTA</b>	TRB, POP, SGC, GCB	<b>8(5.9)</b>	1500	1	95 x 110	780	251	185	175	240
9	<b>67A-FTA</b>	BB, POP, BGC, GCB	<b>8(5.9)</b>	1500	1	95 x 110	780	251	185	190	255
10	<b>46A-FTA</b>	TRB, POP, BGC, GCB	<b>8(5.9)</b>	1500	1	95 x 110	780	251	185	190	255
11	<b>58A-FTA</b>	TRB, POP, SGC, GCB	<b>10(7.35)</b>	1500	1	102 x 110	898	251	185	175	240
12	<b>68A-FTA</b>	BB, POP, BGC, GCB	<b>10(7.35)</b>	1500	1	102 x 110	898	251	185	190	255
13	<b>47A-FTA</b>	TRB, POP, BGC, GCB	<b>10(7.35)</b>	1500	1	102 x 110	898	251	185	190	255
14	<b>85A-FTA</b>	TRB, GOP, HFW, BGC, OFPG, GCA, SDM	<b>10(7.35)</b>	1500	1	102 x 116	947	251	185	205	270
Mini Petter Type, High Speed, Water - Cooled, Light Weight Diesel Engines											
15	<b>98A-FTA</b>	TRB, POP, SGC, GCB	<b>3(2.2)</b>	1500	1	76 x 76	345	251	185	90	140
16	<b>94A-FTA</b>	TRB, POP, SGC, GCB	<b>3.5(2.6)</b>	1500	1	76 x 76	345	251	185	90	140
17	<b>95A-FTA</b>	TRB, POP, SGC, GCB	<b>4.5(3.3)</b>	2050	1	76 x 76	345	251	185	90	140
18	<b>96A-FTA</b>	TRB, POP, SGC, GCB	<b>5(3.7)</b>	2150	1	76 x 76	345	251	185	90	140

Note : All Above Models Are Direct Injection (DI) with Aluminium Piston (AP) & Crankshaft Balance Weight (CBW), Cast Iron Cam Gear & Crank Gear (CIG)

FTA = Fan Type Air-Cooled

TRB = Taper Roller Bearing

POP = Plunger Oil Pump

SGC = Small Gear Cover (Sheet Metal)

GCA = Governing Class A2

HFW = Heavy Flywheel

OFPG = Outside Full Flow Oil Filter With Oil Pressure Gauge

BTA = Blower Type Air-Cooled

BB = Bush Bearing

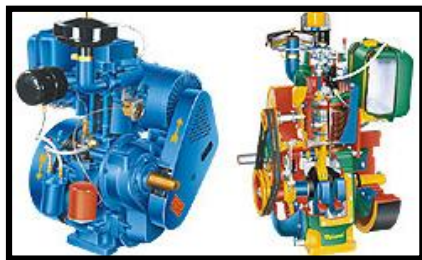
GOP = Gear Oil Pump

BGC = Big Gear Cover (Cast Iron)

GCB = Governing Class B1

SDM = Super Deluxe Model

## Diesel Engine - High Speed, Air-Cooled [BTA] 5 to 10 HP



TECHNICAL DATA ( STANDARD ENGINES)											
Sr. No.	Model No.	Type & Mark	Rated Output HP(kW)	Rated Speed (RPM)	No. Of Cyl.	Bore x Stroke(mm)	Cubic Cap. (cc) per Cyl.	Specific Fuel Consumption At Full Load (SFC)		Weight	
								g/ kWh	g/ bhph	Nett (kgs)	Gross (kgs)
1	<b>55A</b> -BTA	TRB, POP, BGC, GCB	<b>5(3.7)</b>	1500	1	80 x 110	553	251	173	170	235
2	<b>65A</b> -BTA	BB, POP, BGC, GCB	<b>5(3.7)</b>	1500	1	80 x 110	553	251	185	170	235
3	<b>56A</b> -BTA	TRB, POP, BGC, GCB	<b>6.5(4.8)</b>	1500	1	85 x 110	624	251	185	170	235
4	<b>66A</b> -BTA	BB, POP, BGC, GCB	<b>6.5(4.8)</b>	1500	1	85 x 110	624	251	185	170	235
5	<b>76A</b> -BTA	TRB, POP, BGC, GCB	<b>7.5(5.5)</b>	1500	1	87.5 x 110	661	251	185	170	235
6	<b>77A</b> -BTA	BB, POP, BGC, GCB	<b>7.5(5.5)</b>	1500	1	87.5 x 110	661	251	185	175	240
7	<b>57A</b> -BTA	TRB, POP, BGC, GCB	<b>8(5.9)</b>	1500	1	95 x 110	780	251	185	195	260
8	<b>67A</b> -BTA	BB, POP, BGC, GCB	<b>8(5.9)</b>	1500	1	95 x 110	780	251	185	195	260
9	<b>58A</b> -BTA	TRB, POP, BGC, GCB	<b>10(7.35)</b>	1500	1	102 x 110	898	251	185	195	260
10	<b>68A</b> -BTA	BB, POP, BGC, GCB	<b>10(7.35)</b>	1500	1	102 x 110	898	251	185	190	260
11	<b>85A</b> -BTA	TRB, GOP, HFW, BGC, OFPG, GCA, SDM	<b>10(7.35)</b>	1500	1	102 x 116	947	251	185	210	275

Note : All Above Models Are Direct Injection (DI) with Aluminium Piston (AP) & Crankshaft Balance Weight (CBW), Cast Iron Cam Gear & Crank Gear (CIG)

FTA = Fan Type Air-Cooled

TRB = Taper Roller Bearing

POP = Plunger Oil Pump

SGC = Small Gear Cover (Sheet Metal)

GCA = Governing Class A2

HFW = Heavy Flywheel

OFPG = Outside Full Flow Oil Filter With Oil Pressure Gauge

BTA = Blower Type Air-Cooled

BB = Bush Bearing

GOP = Gear Oil Pump

BGC = Big Gear Cover (Cast Iron)

GCB = Governing Class B1

SDM = Super Deluxe Model

## Diesel Engine - High Speed, Air-Cooled [FTA] 10 to 20 HP



TECHNICAL DATA ( STANDARD ENGINES)											
Sr. No.	Model No.	Type & Mark	Rated Output HP(kw)	Rated Speed (RPM)	No. Of Cyl.	Bore x Stroke(mm)	Cubic Cap. (cc) per Cyl.	Specific Fuel Consumption At Full Load (SFC)		Weight	
								g/ kWh	g/ bhph	Nett (kgs)	Gross (kgs)
1	<b>39A-FTA</b>	TRB, GOP, BGC, OFPG, GCB	<b>10(7.35)</b>	1500	2	80 x 110	553	251	185	270	365
2	<b>78A-FTA</b>	BB, GOP, BGC, OFPG, GCB	<b>10(7.35)</b>	1500	2	80 x 110	553	251	185	270	365
3	<b>40A-FTA</b>	TRB, GOP, BGC, OFPG, GCB	<b>13(9.6)</b>	1500	2	85 x 110	624	251	185	270	365
4	<b>79A-FTA</b>	BB, GOP, BGC, OFPG, GCB	<b>16(11.8)</b>	1500	2	85 x 110	624	251	185	270	365
5	<b>41A-FTA</b>	TRB, GOP, BGC, OFPG, GCB	<b>15(11.0)</b>	1500	2	87.5 x 110	661	251	185	270	365
6	<b>80A-FTA</b>	BB, GOP, BGC, OFPG, GCB	<b>20 (14.7)</b>	1500	2	87.5 x 110	661	251	182	270	365
7	<b>42A-FTA</b>	TRB, GOP, BGC, OFPG, GCB	<b>16(11.8)</b>	1500	2	95 x 110	780	251	185	275	370
8	<b>81A-FTA</b>	BB, GOP, BGC, OFPG, GCB	<b>25 (18.4)</b>	1500	2	95 x 110	780	251	185	275	370
9	<b>43A-FTA</b>	TRB, GOP, HFW, BGC, OFPG, GCB	<b>20 (14.7)</b>	1500	2	102 x 110	898	251	185	290	385
10	<b>82A-FTA</b>	BB, GOP, HFW, BGC, OFPG, GCB	<b>20 (14.7)</b>	1500	2	102 x 110	898	251	185	290	385
11	<b>44A-FTA</b>	TRB, GOP, HFW, BGC, OFPG, GCA, SDM	<b>20 (14.7)</b>	1500	2	102 x 116	947	251	185	295	390
12	<b>88A-FTA</b>	BB, GOP, HFW, BGC, OFPG, GCA, SDM	<b>20 (14.7)</b>	1500	2	102 x 116	947	251	185	239	390

Note : All Above Models Are Direct Injection (DI) with Aluminium Piston (AP) & Crankshaft Balance Weight (CBW), Cast Iron Cam Gear & Crank Gear (CIG)

FTA = Fan Type Air-Cooled

TRB = Taper Roller Bearing

POP = Plunger Oil Pump

SGC = Small Gear Cover (Sheet Metal)

GCA = Governing Class A2

HFW = Heavy Flywheel

OFPG = Outside Full Flow Oil Filter With Oil Pressure Gauge

BTA = Blower Type Air-Cooled

BB = Bush Bearing

GOP = Gear Oil Pump

BGC = Big Gear Cover (Cast Iron)

GCB = Governing Class B1

SDM = Super Deluxe Model



## Diesel Engine - High Speed, Air-Cooled [BTA] 10 to 20 HP



TECHNICAL DATA ( STANDARD ENGINES)											
Sr. No.	Model No.	Type & Mark	Rated Output HP(kw)	Rated Speed (RPM)	No. Of Cyl.	Bore x Stroke(mm)	Cubic Cap. (cc) per Cyl.	Specific Fuel Consumption At Full Load (SFC)		Weight	
								g/ kWh	g/ bhph	Nett (kgs)	Gross (kgs)
1	<b>39A</b> -BTA	TRB, GOP, BGC, OFPG, GCB	<b>10(7.35)</b>	1500	2	80 x 110	553	251	185	275	370
2	<b>78A</b> -BTA	BB, GOP, BGC, OFPG, GCB	<b>10(7.35)</b>	1500	2	80 x 110	553	251	185	275	370
3	<b>40A</b> -BTA	TRB, GOP, BGC, OFPG, GCB	<b>15(11.0)</b>	1500	2	85 x 110	624	251	185	275	370
4	<b>79A</b> -BTA	BB, GOP, BGC, OFPG, GCB	<b>16(11.8)</b>	1500	2	85 x 110	624	251	185	275	370
5	<b>41A</b> -BTA	TRB, GOP, BGC, OFPG, GCB	<b>20 (14.7)</b>	1500	2	87.5 x 110	661	251	185	275	370
6	<b>80A</b> -BTA	BB, GOP, BGC, OFPG, GCB	<b>20 (14.7)</b>	1500	2	87.5 x 110	661	251	182	275	370
7	<b>42A</b> -BTA	TRB, GOP, BGC, OFPG, GCB	<b>25 (18.4)</b>	1500	2	95 x 110	780	251	185	280	375
8	<b>81A</b> -BTA	BB, GOP, BGC, OFPG, GCB	<b>25 (18.4)</b>	1500	2	95 x 110	780	251	185	280	375
9	<b>43A</b> -BTA	TRB, GOP, HFW, BGC, OFPG, GCB	<b>20 (14.7)</b>	1500	2	102 x 110	898	251	185	295	390
10	<b>82A</b> -BTA	BB, GOP, HFW, BGC, OFPG, GCB	<b>20 (14.7)</b>	1500	2	102 x 110	898	251	185	295	390
11	<b>44A</b> -BTA	TRB, GOP, HFW, BGC, OFPG, GCA, SDM	<b>20 (14.7)</b>	1500	2	102 x 116	947	251	185	300	395
12	<b>88A</b> -BTA	BB, GOP, HFW, BGC, OFPG, GCA, SDM	<b>20 (14.7)</b>	1500	2	102 x 116	947	251	185	300	395

Note : All Above Models Are Direct Injection (DI) with Aluminium Piston (AP) & Crankshaft Balance Weight (CBW), Cast Iron Cam Gear & Crank Gear (CIG)

FTA = Fan Type Air-Cooled

TRB = Taper Roller Bearing

POP = Plunger Oil Pump

SGC = Small Gear Cover (Sheet Metal)

GCA = Governing Class A2

HFW = Heavy Flywheel

OFPG = Outside Full Flow Oil Filter With Oil Pressure Gauge

BTA = Blower Type Air-Cooled

BB = Bush Bearing

GOP = Gear Oil Pump

BGC = Big Gear Cover (Cast Iron)

GCB = Governing Class B1

SDM = Super Deluxe Model

**Office: Suit 5B, Uppals Plaza M6, 5<sup>th</sup> Floor, Jasola District Center, New delhi-110025, INDIA**  
**Tel: +91-11-40563451, Fax: +91-11-40563450, Email: info@salsonsagri.com**